

T-TC Time Error

Testing Transparent Clocks as per
ITU-T G.8273.3 using Paragon-X

- Noise Generation
- Noise Tolerance
- Noise Transfer
- Transient Response
- Holdover Performance

The accuracy of Telecom Transparent Clocks (T-TCs) is essential to the successful roll-out of LTE-A and TDD-LTE. To meet the new G.8273.3 compliance limits, T-TCs must meet a very stringent constant Time Error (cTE) limit of 20 or 50 nanoseconds depending on device class. This ensures that the maximum number of nodes can be deployed within the network's Time-Error budget.

This Test Guide shows how the Calnex Paragon-X can be used to prove T-TC compliance to G.8273.3 and provides procedures to measure noise generation, time noise tolerance and transfer, packet layer transient response and holdover performance.

Contents

1.	Hardware and Software Required.....	3
2.	Connecting Paragon-X to T-TC (Device under Test).....	4
3.	Setting up the Paragon-X for G.8273.3 Conformance Tests.....	5
3.1	Connection to Paragon-X from GUI.....	5
3.2	Selection of 1588 Operating Mode and Master/Slave Mode	5
4.	Noise Generation – G.8273.3 Section 7.1.....	9
5.	Time Noise Tolerance – G.8273.3 Section 7.2.....	16
6.	Time Noise Transfer – G.8273.3 Clause 7.3.....	18
7.	Packet Layer Transient Response and Holdover Performance – G.8273.3 Clause 7.4.....	19
	Appendix 1 – Tests for a G.8273.3 T-TC	20

1. Hardware and Software Required

Paragon-X

Option 110	1GbE interface support
Option 111	10GbE interface support (if DUT has 10G interface)
Option 201	Advanced IEEE1588v2 features
Option 205	Wander measurement
Option 206	Phase and time measurement
Option 213	SyncE wander and ESMC (if DUT uses SyncE)
Option 250	IEEE 1588v2 One-box T-BC, T-TC and OC Test
Option 133	External 1pps/ToD/Frequency Converter accessory (if required to match DUT outputs)

Software versions:

- **Paragon-X:** X.10.35.xx and later
- **Calnex Analysis Tool (CAT):** v18.xx and later

Note: Calnex recommends checking the Calnex website for access to the latest software release versions.

Accessories

- SFP or SFP+ devices as required¹
- Cables as required
- Calnex BNC/RJ-45 adapter cable (required for 1pps accuracy/time error measurement)

Frequency Reference Source

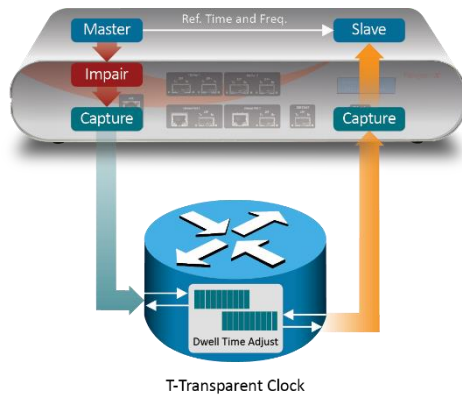
Option 132	Rubidium Interface (optional)
------------	-------------------------------

Document References

- Recommendation ITU-T G.8273.3 Timing Characteristics of Telecom Transparent Clocks
- IEEE Std 1588™ -2008 IEEE Standard for a Precision Clock Synchronization Protocol for Networked Measurement and Control Systems
- Tech Note Cabling Considerations Document [CX5009]

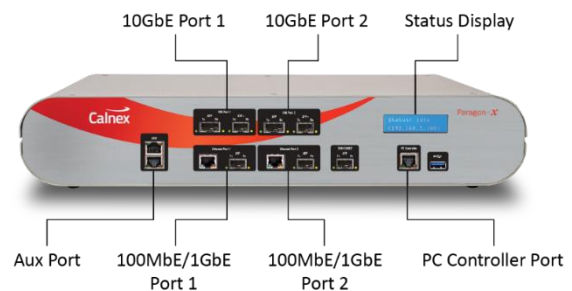
¹ XFP devices are not recommended for Time Error measurements as the retiming that is an integral element of the XFP introduces significant uncertainty when performing a Time Error test

2. Connecting Paragon-X to T-TC (Device under Test)



Front Panel

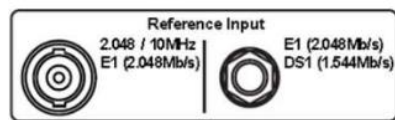
- 100MbE Electrical or Optical (SGMII SFP)
- 1GbE Electrical or Optical (SFP) – with option 110 fitted
- 10GbE Optical (XFP or SFP+) – with option 111 fitted



Rear Panel

The Paragon-X accepts the following reference clocks which should be applied to one of the reference inputs on the rear panel of the Paragon-X:

- 2.048/10MHz
- E1 (2.048Mb/s)
- DS1 (T1) (1.544Mb/s)



Connections

1. Connect Port 1 (Master side of Paragon-X) to the T-TC Master side.
2. Connect Port 2 (Slave side of Paragon-X) to the T-TC Slave side.
3. Connect the external reference, e.g. 10MHz, to the Paragon-X Reference Input.

3. Setting up the Paragon-X for G.8273.3 Conformance Tests

The following steps are required to set up the Paragon-X prior to performing the G.8273.3 Conformance tests:

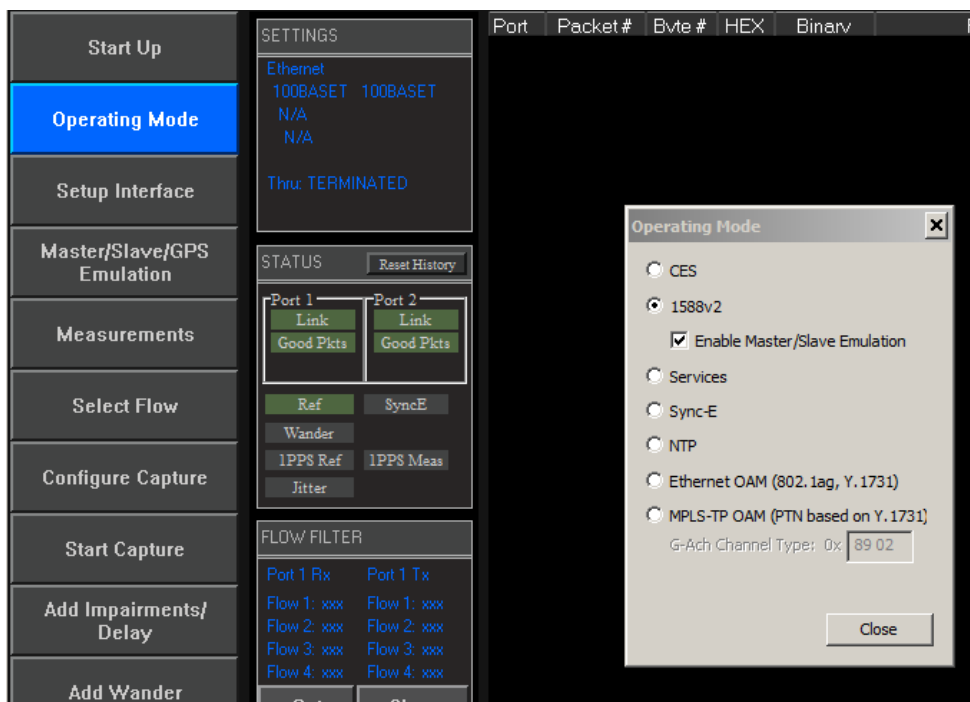
- 3.1. Connection to Paragon-X from GUI
- 3.2. Selection of 1588 Operating Mode and Master/Slave Emulation
- 3.3. Configuration of physical connections
- 3.4. Measurement configuration
- 3.5. Preparing Master/Slave Emulation operation
- 3.6. Confirm PTP traffic on interfaces
- 3.7. Filtering capture traffic
- 3.8. Start of Master/Slave Emulation ready for test

3.1 Connection to Paragon-X from GUI

1. Verify the physical connections have been completed as described in Section 2.
2. Start the Paragon-X GUI.
3. Select **Start Up** and **Connect**.
4. Enter the IP address of the Paragon-X (displayed on Paragon-X status display).

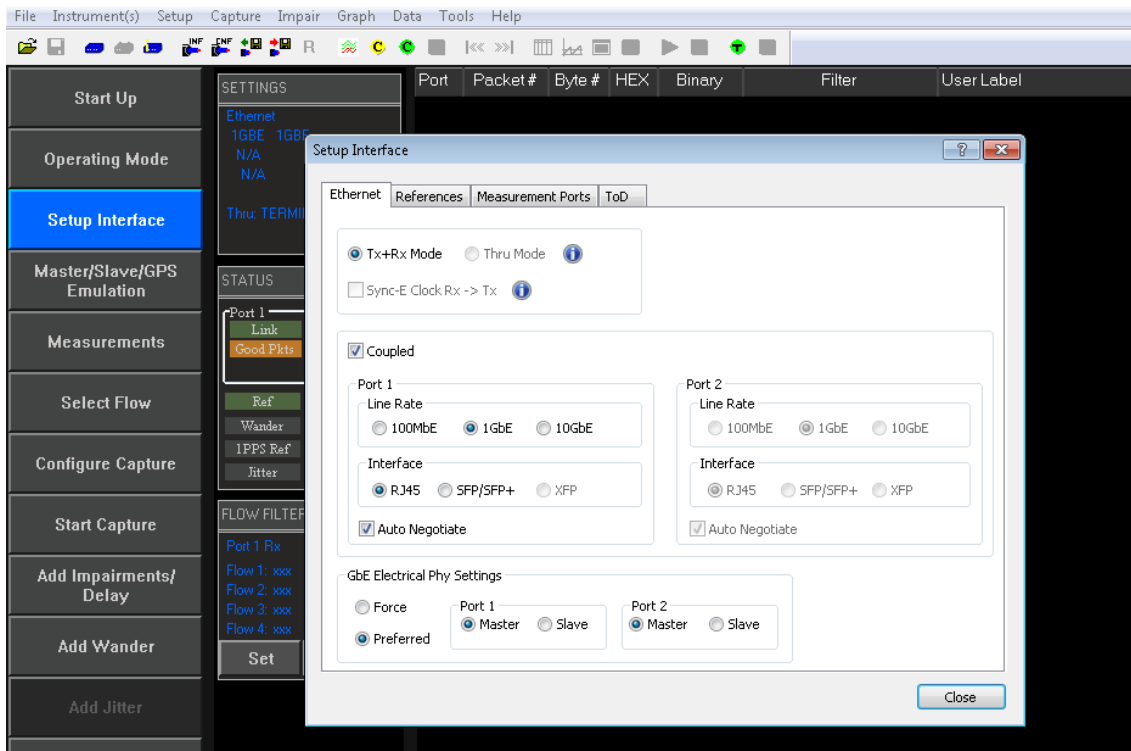
3.2 Selection of 1588 Operating Mode and Master/Slave Mode

Select **Operating Mode** and enable **1588v2** and **Master/Slave Emulation**.



3.3 Configuration of physical connections

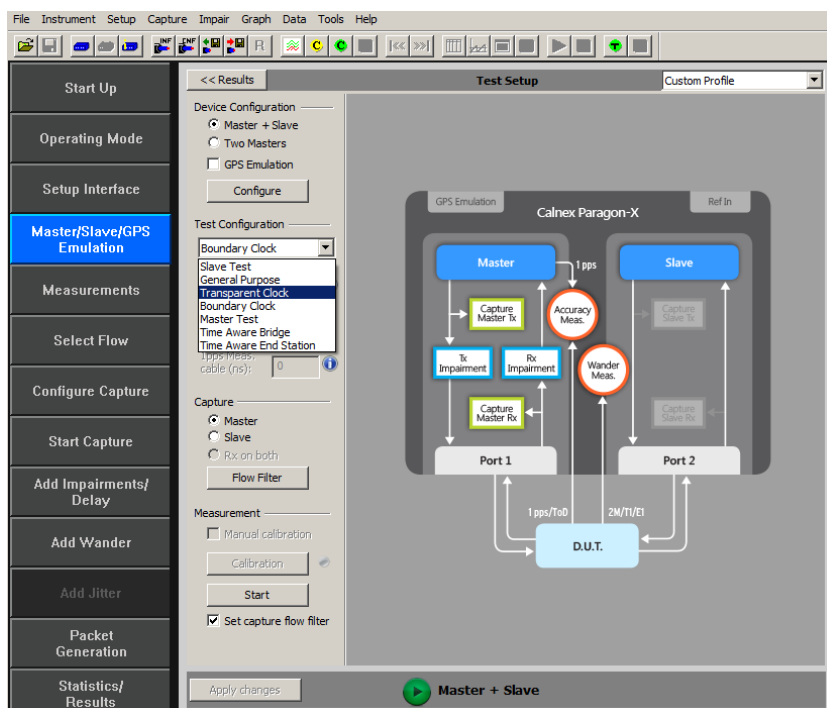
Select **Setup Interface** then **Line Rate** to match the T-TC under test.



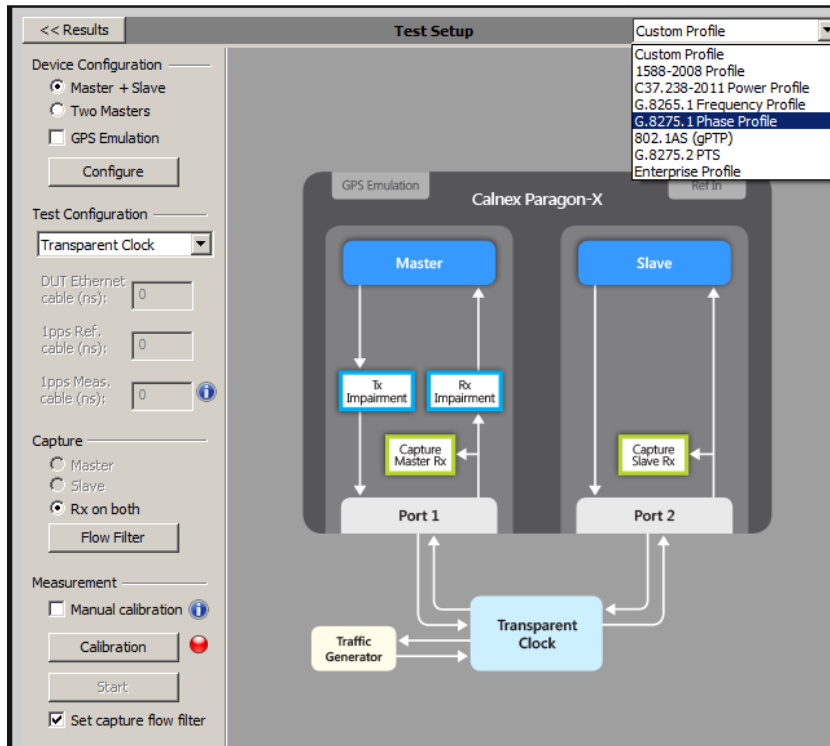
3.4 Preparing for Master/Slave Emulation

It is assumed that a G.8275.1 profile will be used in testing to the G.8273.3 standard and as a result testing will be carried out using L2 encapsulation in Multicast mode. The Master/Slave Emulation can be configured to use other profiles, e.g. using Unicast UDP/IPV4 etc., however, it should be noted that these profiles will not conform to the G.8273.3 standard.

1. Select **Master/Slave Emulation** then select **Transparent Clock** in the **Test Configuration** drop down menu.



2. Select **G.8275.1** profile from the **Custom Profile** drop down menu.

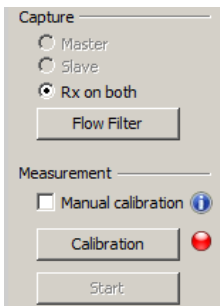


Calibration

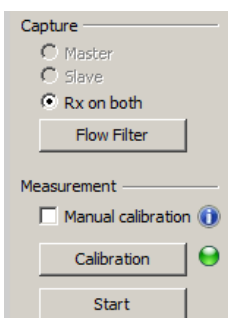
Auto-calibration

By default, the Paragon-X uses the same interface types on both sides of the T-TC. If this is the case then the end-to-end delays from the Paragon-X Master to the Paragon-X Slave including the cable delays can be factored out of the measurements by carrying out an auto-calibration step.

To do this you must connect the cables to be used in the test together using a passive connector so that there is a complete path from the Paragon-X Master to the Paragon-X Slave. When this is done, press the **Calibration** button.



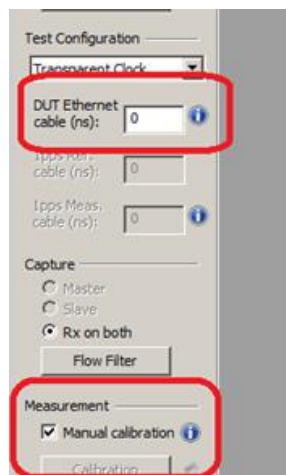
This will carry out a measurement that will calibrate the delays. When complete the LED which change to green.



Manual calibration

If the test set up has different interface types on each port (e.g. 1Gb Electric and 1Gb Optical) then auto-calibration cannot be performed. In this case the cable delays must be entered manually for the cables on either side of the T-TC connected to the Paragon-X.

Select **Manual calibration** and enter the DUT to Paragon-X **cable delay**. Values of 5.1 ns per 1 metre of electrical cable and 4.9 ns per 1 metre of optical cable can be expected. Only full nanosecond values are counted, so calculated values need to be rounded up or down to the nearest full nanosecond value.



3.5. Confirm PTP traffic on interfaces

1. Check the link to make sure that the PTP packets are running without error. If working successfully both **Link** and **Packet** status should show green status.

Link Status			
Port	Link	Rx Packet	
1			GOOD PACKETS
2			GOOD PACKETS

2. Stop **Master/Slave Emulation** in order to configure capture characteristics and to enable impairment operation.

3.6. Filtering capture and impairment traffic

The tests detailed in Sections 4 to 7 of this document are dependent on the generation, capture and impairment of the 1588 messages associated with T-TC phase and sync performance. It is therefore necessary to ensure that the correct messages are handled by the Paragon-X in Master/Slave Emulation mode. This is achieved by defining a set of traffic filters which will determine the messages that are captured and impaired.

By default, the capture filters are automatically enabled for the Transparent Clock test when the **Start** button is pressed in the **Master/Slave Emulation** Test Configuration window.

4. Noise Generation – G.8273.3 Section 7.1

Test Description

The noise generation of a T-TC represents the amount of noise produced at the output of the T-TC when there is an ideal input reference packet timing signal and, if the T-TC is supporting physical layer frequency reference, an ideal physical layer reference. The noise generation has two components, the constant time error (cTE) and the time noise generation (MaxITel, dTE).

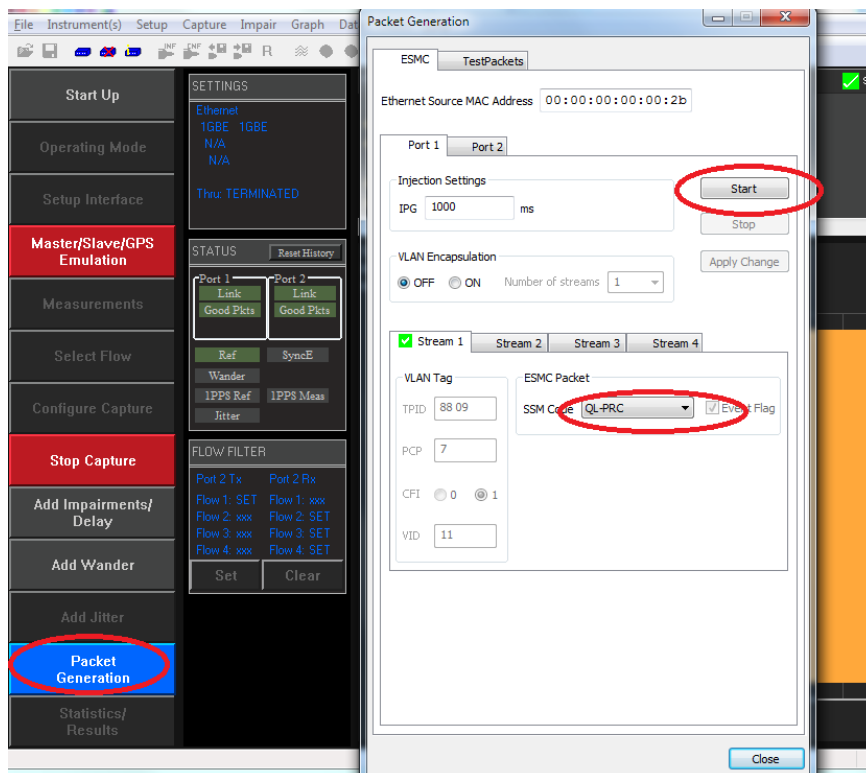
Measurement Process

The standard specifies that the test should be carried out with both PTP and SyncE active.

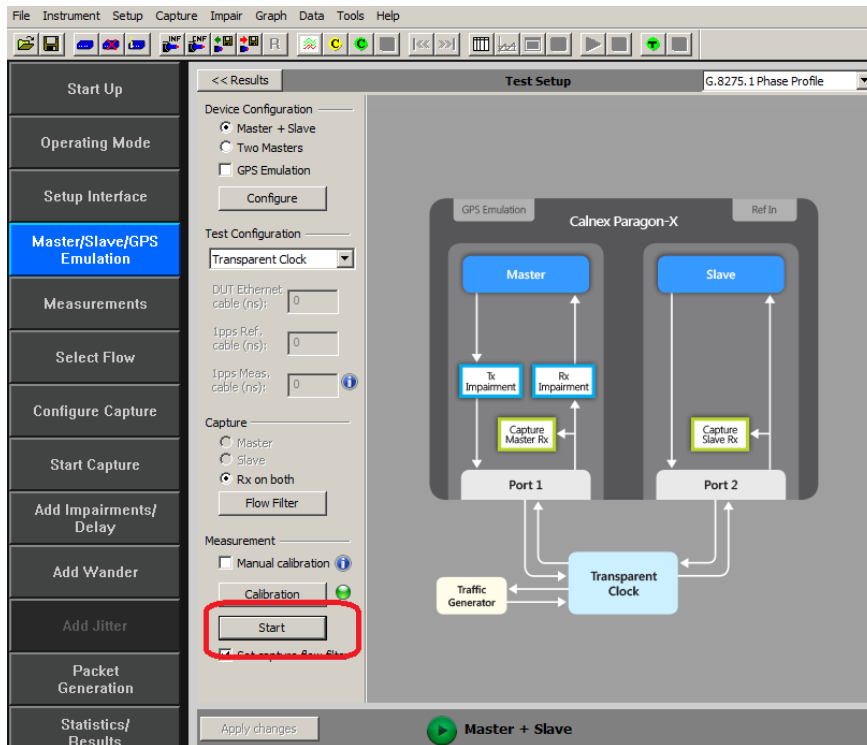
Note: The Master/Slave Emulation Configuration steps described in Section 3 must be performed prior to this test. **Impairments are not required for this test.**

4.1. Test Procedure

1. To enable SyncE, select **Packet Generation** with **SSM code** of **QL_PRC**. To start ESMC generation click on the **Start** button.



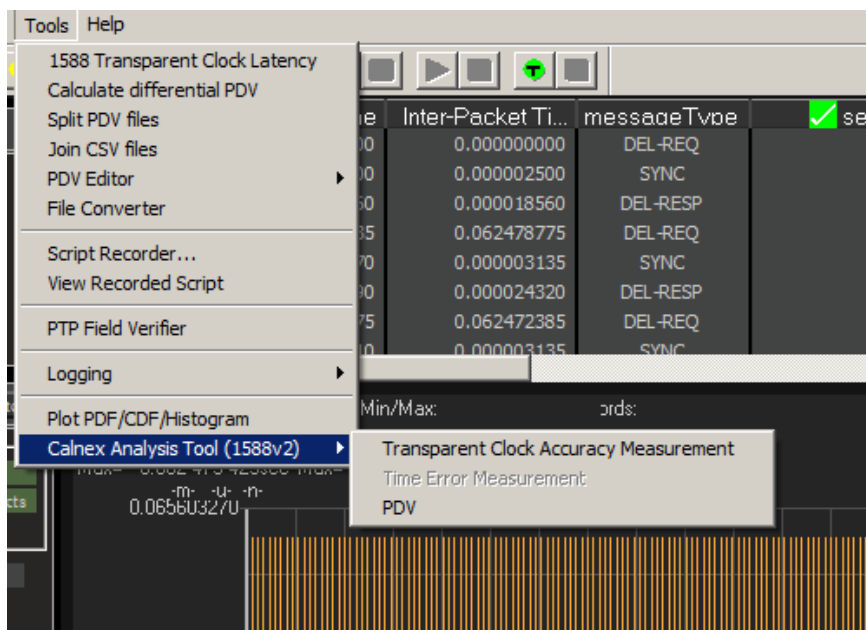
- With Master/Slave Emulation mode running, start a capture using the **Start** button in the Master/Slave **Test Setup** page.



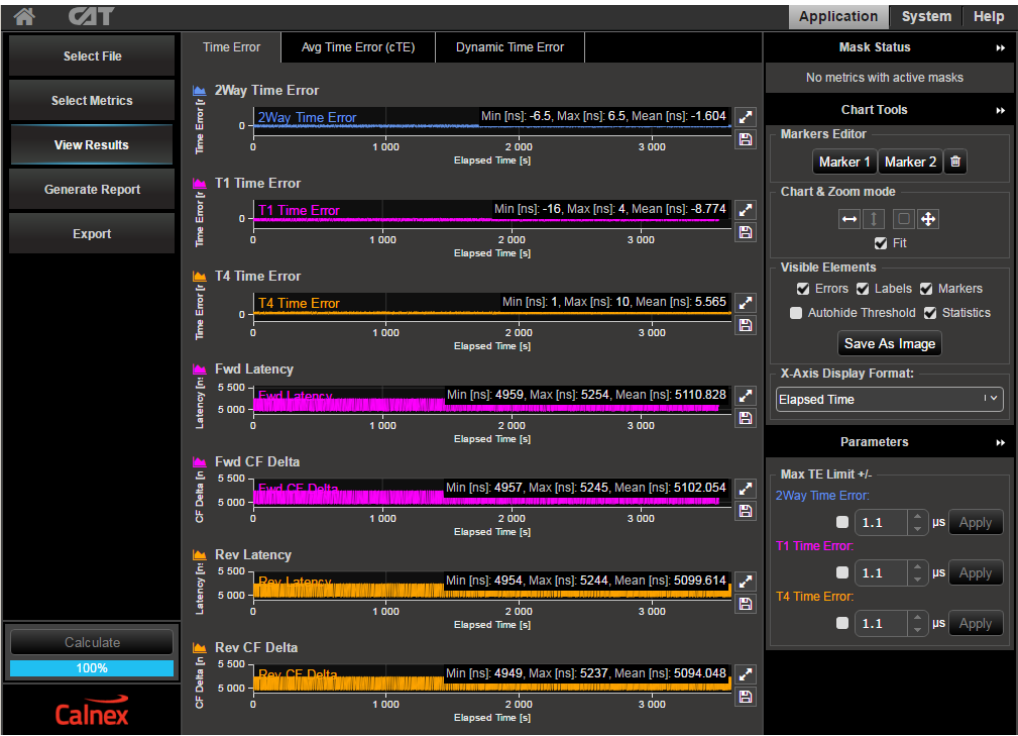
- Allow the capture to run for at least **2000s**. Then use the **Stop Capture** button to stop the capture.
- Measurements:** Time Error results can either be viewed during capture or after capture has been stopped.

Time Error Results (Constant Time Error)

- Select **Tools > Calnex Analysis Tool (1588v2) > Transparent Clock Accuracy Measurement**.



The **Calnex Analysis Tool** will launch and display the **Time Error** metrics tab. This will include the metrics **Time Error**, **Avg Time Error (cTE)** and **Dynamic Time Error**.



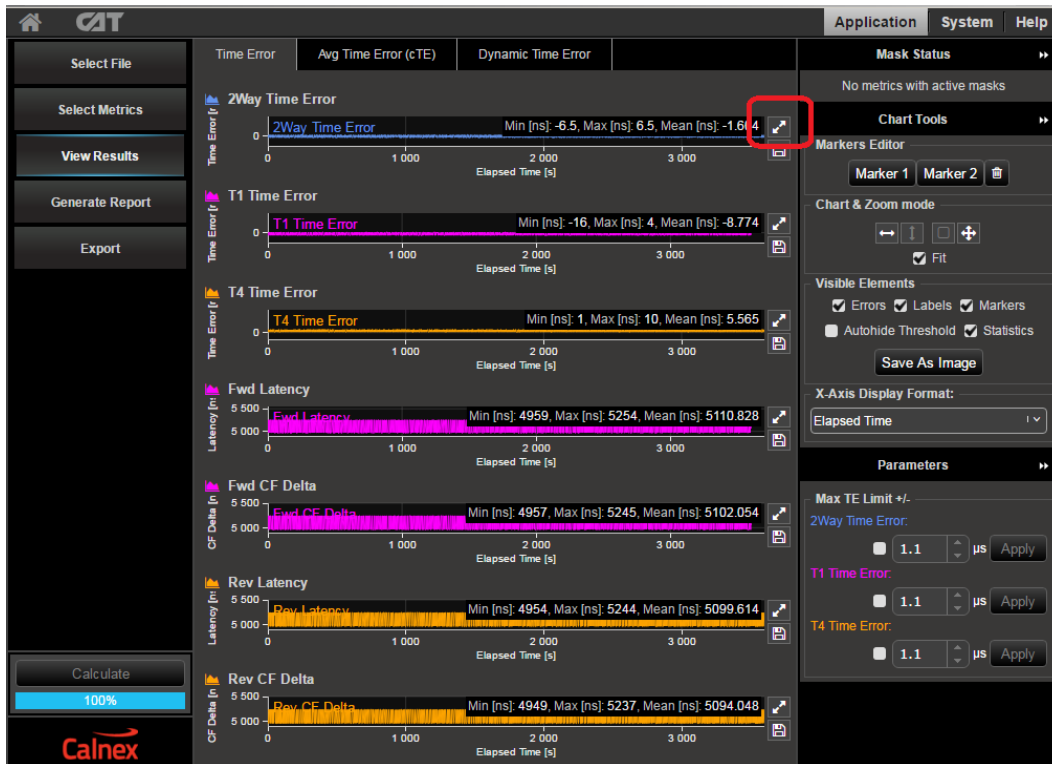
The key measurement for T-TC Time Error is the **2Way Time Error** result for the above metrics. Focus should be placed on the analysis of this result.

T1 and T4 results are useful in the case where further analysis is required investigate issues raised by the 2Way result values.

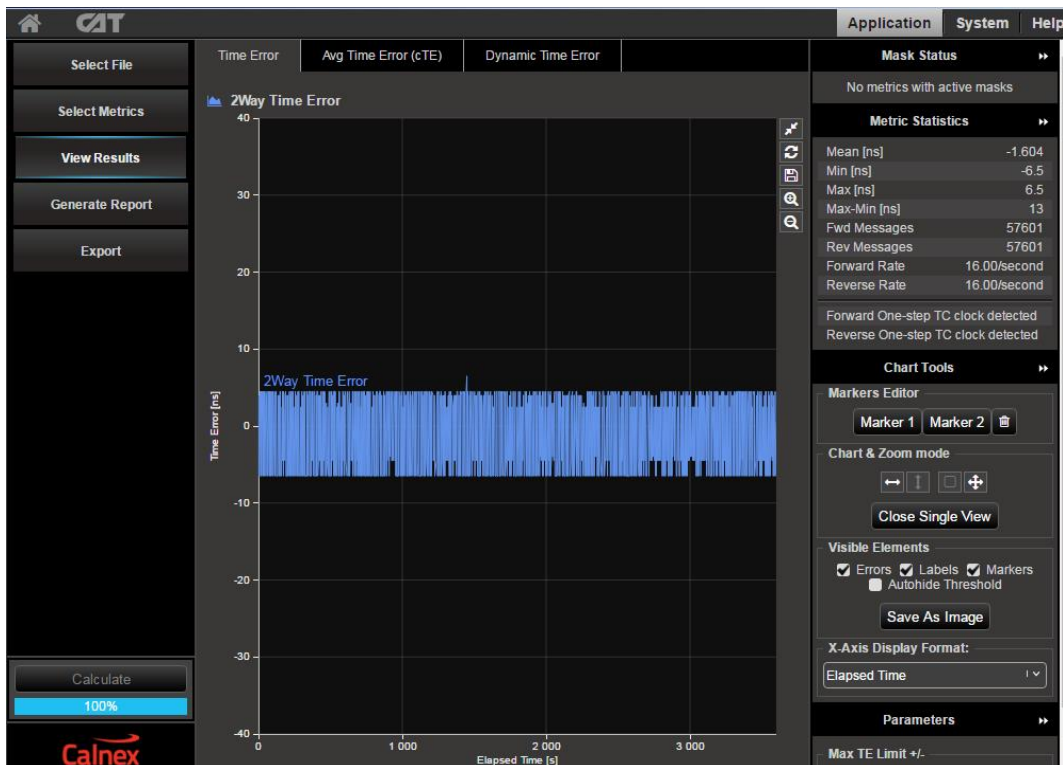
Note: The complete set of metrics can be viewed by expanding the appropriate list in the **Measurement Analysis** block by clicking on the + symbol against each metric.

Time Error Measurements			?
<input checked="" type="checkbox"/>	Time Error	^	?
<input checked="" type="checkbox"/>	2Way Time Error	100%	
<input checked="" type="checkbox"/>	T1 Time Error	100%	
<input checked="" type="checkbox"/>	T4 Time Error	100%	
<input checked="" type="checkbox"/>	Fwd Latency	100%	
<input checked="" type="checkbox"/>	Fwd CF Delta	100%	
<input checked="" type="checkbox"/>	Rev Latency	100%	
<input checked="" type="checkbox"/>	Rev CF Delta	100%	
<input type="checkbox"/>	Avg Time Error (cTE)	100%	?
<input type="checkbox"/>	Dynamic Time Error	100%	?

Individual graphs can be displayed by clicking on the highlighted area in the display below.



This will display:



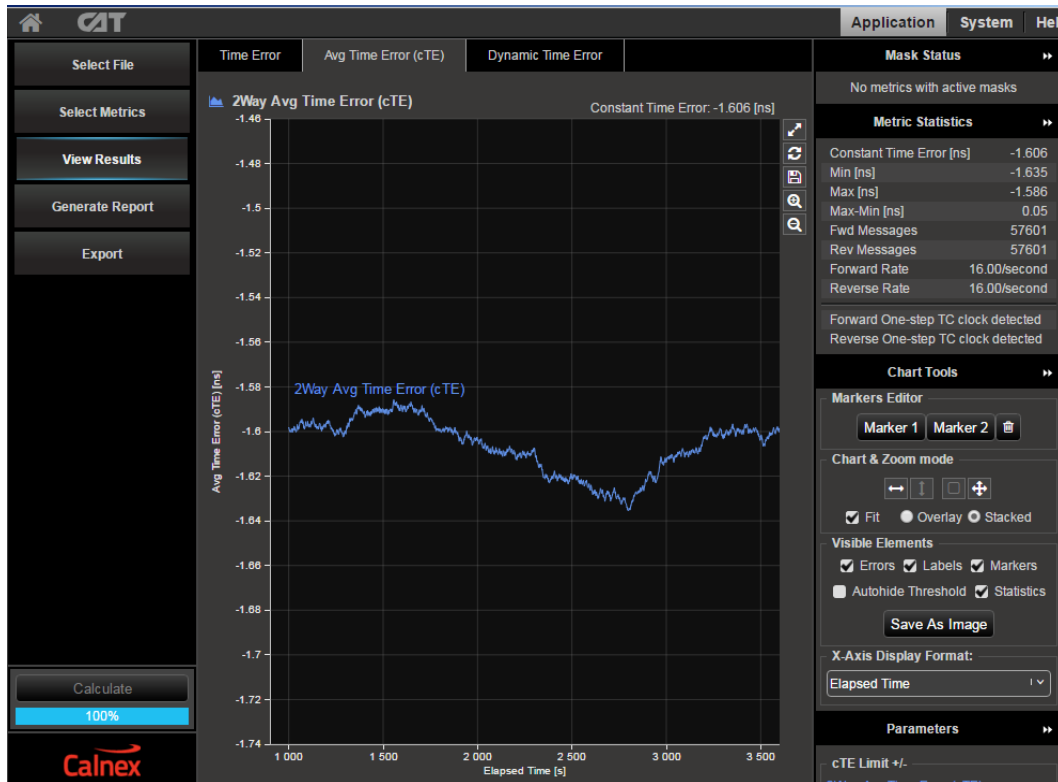
To return to the multi graph display click on the same icon in the single graph display.

2. Select the **Avg Time Error (cTE)** metric tab and this will show the **2Way Avg Time Error (cTE)** graph.
This is a measure of the timing being delivered by the egress 1588 PTP flow and is the best view of the core data.
The **Constant Time Error** value will be displayed. This result can expose the underlying phase movement, significant to the slave.

G.8273.3 refers to Constant Time Error stating:

“Note: Constant time error and the method to estimate are defined in G.8260. For the purpose of testing the limits in Table 1, an estimate of constant time error should be obtained by averaging the time error sequence over 1000s.”

To cater for this definition, the Constant Time Error displayed is a result of a moving average of 1000s being applied to the raw Time Error results.



3. Check your result conforms to the G.8273.3 spec [1.4.1].

There are two classes of device:

- Class A for devices which conform to $\pm 50\text{ns}$ cTE
- Class B for devices which conform to $\pm 20\text{ns}$ cTE

Check with the vendor which class of device is being tested.

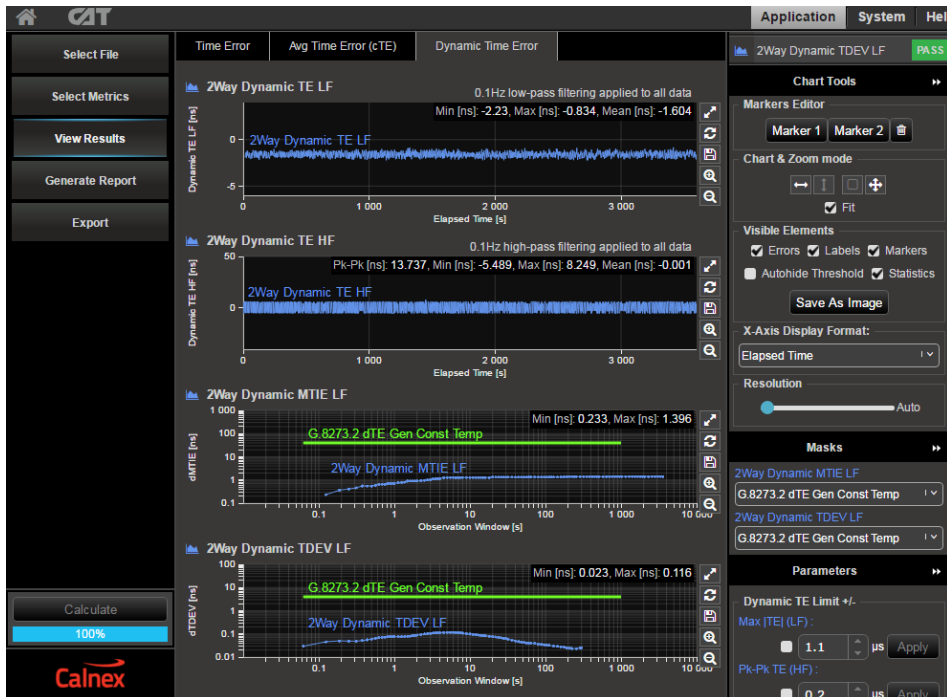
Further Analysis (Optional)

- Although not part of the standard test, further analysis can be provided by repeating the test for T1 and T4 constant Time Error to inspect for patterns and/or offsets.
- For further analysis, select the **Time Error** tab for unfiltered Time Error results i.e. **2Way Time Error**, **T1 Time Error (forward)** and **T4 Time Error (reverse)** to further characterise the T-TC. These raw Time Error results containing both Constant and Dynamic Time Error may be useful as a troubleshooting aid.

Time Error Results (Dynamic Time Error)

- Select the **Dynamic Time Error** tab to display the **filtered** Time Error results. This will display the Dynamic Time Error results as Low Frequency measurements and High Frequency measurements.

Note that these results are filtered at 0.1Hz.



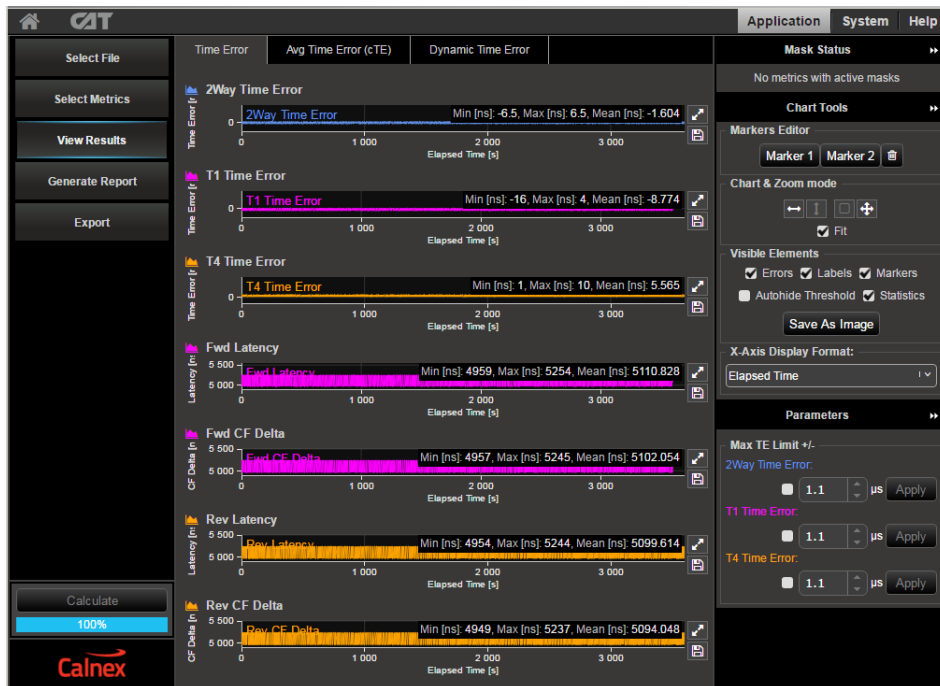
- Compare the results against the ITU-T limits by loading the **G.8237.2 dTE Gen Const Temp** masks.
- Check for PASS/FAIL versus masks. If the masks pass then the status in the **Mask Status** Block will indicate **PASS**. Mask failure will be indicated by **FAIL**.

Time Error Results (MaxTE)

- Select the **Time Error** tab to display the **raw unfiltered** Time Error results.



- Click on the **Select Metrics** button, then select the **2Way Time Error** metric only. This will display the following graph:



- Set the Max|TE| limit to either **100ns** for **Class A** devices or **70ns** for **Class B** devices. This will change the **Thresholds** on the graph.
- Compare the results against the thresholds.



5. Time Noise Tolerance – G.8273.3 Section 7.2

Test Description

This test checks whether the clock can maintain network limits at the output with maximum noise at the input.

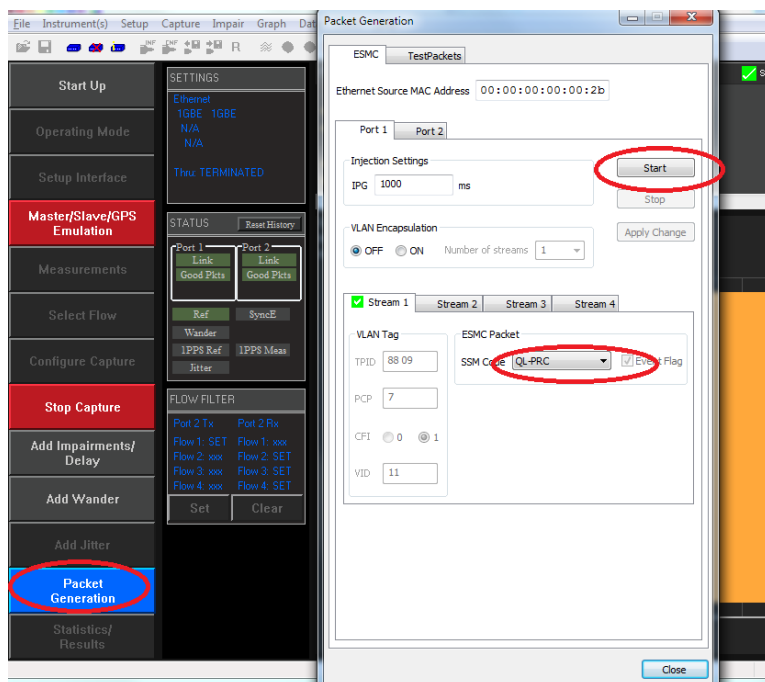
Measurement Process

The standard recommends testing by stressing only the SyncE input. This is reflected in the test procedure detailed below.

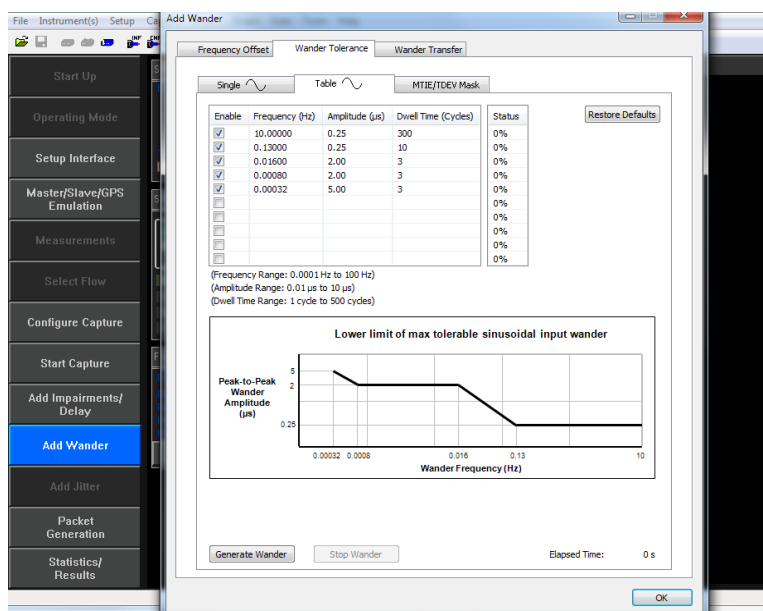
Note: The Master/Slave Emulation Configuration steps described in Section 3 must be performed prior to this test.

Test Procedure

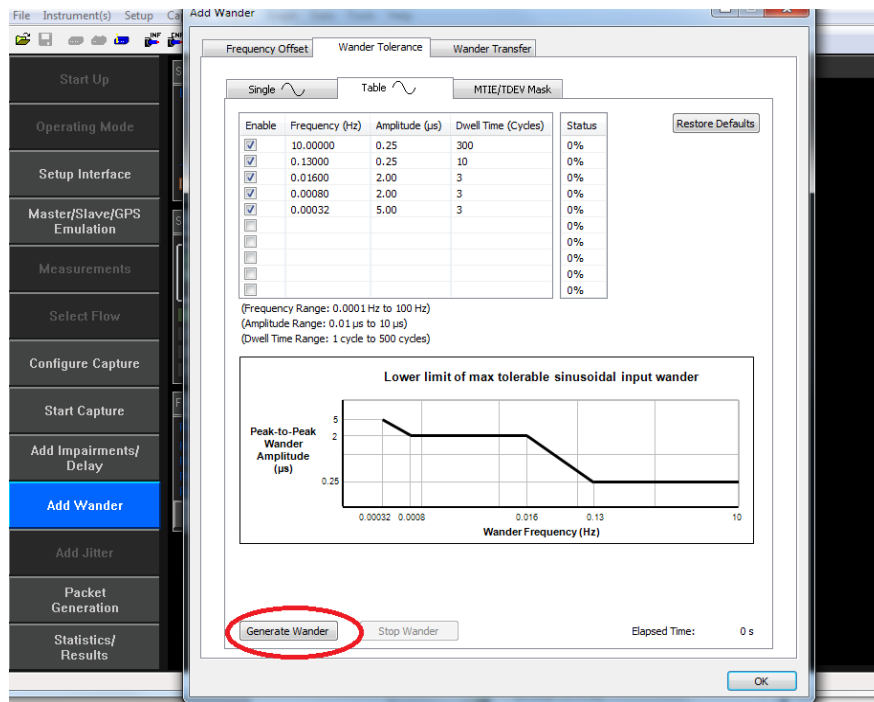
1. To enable SyncE ESMC Generation, select **Packet Generation** with **SSM code** of **QL_PRC**.
2. To start ESMC generation press the **Start** button.



3. Select **Add wander** > **Wander Tolerance** > **Table** to apply sinusoidal wander to the SyncE input based on G.8262 Section 9.1.1 Table 9.



4. Select **Generate Wander** to stress the SyncE input accordingly.



5. Select **Start Capture** to begin the measurement.
6. Once Wander Generation has finished and at least **1000s** have passed, select **Stop Capture** to end the measurement.

Expected Outcome

The Vendor DUT should maintain reference and not be subjected to switching reference or enter holdover state. This must be determined from the device itself (e.g. via the management interface).

6. Time Noise Transfer – G.8273.3 Clause 7.3

Test Description

Measures how Time Error on the input is transferred to the output.

Measurement Process

The Noise Transfer requirements for a T-TC device have not yet been finalised.

The test procedure will appear here once the Noise Transfer requirements are more fully defined.

7. Packet Layer Transient Response and Holdover Performance – G.8273.3 Clause 7.4

7.1. Test Description – Packet Layer Transient Response

The PTP to PTP transient response requirements applicable to a T-TC have not yet been defined.

The test procedure will appear here when such a definition is available.

7.2. Test Description – Holdover Performance

A T-TC does not support time holdover.

Appendix 1 – Tests for a G.8273.3 T-TC

Test	Objective	Test Method	Output Limit (PTP and 1pps) ²		
Time Error Generation (G.8273.3, Clause 7.1)	With stable input references, measure the inherent time error (Max TE , cTE and dTE) produced by the internal clock.	Apply a stable time reference to the PTP input. Apply a stable frequency reference to the SyncE input. Repeat without a SyncE reference ³ .		Class A	Class B
			Max TE : ⁴	≤ 100ns	≤ 70ns
			cTE:	≤ 50ns	≤ 20ns
			dTE _{LF} : ⁵	40ns MTIE, 4ns TDEV	
			dTE _{HF} : ⁶	70ns p-p	
Time Error Tolerance (G.8273.3, Clause 7.2)	Measures whether the clock can operate correctly with maximum noise input at the input. The test must be carried out with noise on the SyncE input. Clock under test should not: <ul style="list-style-type: none">• generate alarms• switch reference• go into holdover	SyncE tolerance: Simultaneously apply sine wave phase wander to the SyncE input according to G.8262, Table 9. Repeat without a SyncE reference ⁷ .	No output performance limit. Clock under test should not: <ul style="list-style-type: none">• generate alarms• switch reference• go into holdover		
Time Error Transfer (G.8273.3, Clause 7.3)	Measures how time error on the input is transferred to the output. SyncE-to-PTP transfer function: Upper cut-off from 1 to 10Hz	SyncE to PTP: Apply a stable time reference to the PTP input. Apply a set of sine wave phase modulations of 200ns p-p amplitude at several different frequencies.	Tone frequencies and amplitudes		
Transients and Holdover (G.8273.3, Clause 7.4, plus Annex B,	Measure the response to a SyncE rearrangement transient.	No procedure defined yet.	No performance limit defined		
	Measures the response to entry into holdover caused by loss of packets at PTP input.	A T-TC does not support Time holdover.	No performance limit defined		

² Same limits apply to 1pps and PTP outputs. It is assumed that the 1pps should track the PTP output closely, although there is no specification for how closely they should track.

³ G.8273.3 doesn't currently specify the performance in the absence of SyncE, therefore repeating the test without the use of SyncE input reference is optional.

⁴ Max|TEI is calculated on the raw, unfiltered time error data.

⁵ MTIE and TDEV are calculated after low-pass filtering by 0.1Hz. Same values apply to both Class A and Class B devices.

⁶ TIE is measured after high-pass filtering by 0.1Hz. Same values apply to both Class A and Class B devices.



Calnex Solutions Ltd
Oracle Campus
Linlithgow
EH49 7LR
United Kingdom

t: +44 (0) 1506 671 416
e: info@calnexsol.com

calnexsol.com

© Calnex Solutions, 2018. This information is
subject to change without notice.

CX5021 v4.0 November 18